



DPSV – ADAMS VISION

DSPV ADAMS VISION

MAIN PARTICULARS

LENGTH, OVERALL	307 FT	93.6M
LENGTH, B.P	284 FT	86.6M
BREADTH	64.62 FT	19.7M
DEPTH	25.75 FT	7.85M
DRAFT	20.66 FT	6.3 M
DECK CAPACITY	11,259 sq. ft.	1046M2 Area, 10t/M2 Loading
MOONPOOL	19.68' x 17.32'	6.0 X 5.28M
ROV	Optional	

MAIN PROPULSION

MAIN PROPELLERS	2 X AZIMUTH THRUSTERS AZP 100 FP
RETRACTABLE THRUSTERS	1 X RETRACTABLE AZIMUTH THRUSTER
TUNNEL THRUSTERS	2 X TUNNEL THRUSTERS TT 2200 DP CP

CRANE

2 X 5Te @ 15m OUTREACH, ONE MAN RIDING CERTIFIED
 100Te HYDRAMARINE OFFSHORE KNUCKLE JIB CRANE ACTIVE
 HEAVE COMPENSATED 1 TE MAN RIDING CAPACITY
 25 METRIC TONS @32M OUTREACH SINGLE LINE (MAX)
 75 METRIC TONS @20M OUTREACH SINGLE LINE
 100 METRIC TONS @15M OUTREACH SINGLE LINE
 WINCH/CRANE ARE IN BASE CASE DESIGNED FOR SWL 100 SINGLE
 LINE RESULTING CRANE LOAD
 75 TS SWL TO 2,000 M DEPTH GIVING 100 TON RESULTING
 CRANE LOAD @ MAX RAD 15M

SAT SYSTEM

9-MAN 984'



ACCOMODATIONS

68 BERTHS

DOCUMENTATION

YEAR BUILT:	2009
FLAG:	BAHAMAS
DP SYSTEM:	DP2

TONNAGE

GROSS TONNAGE:	4850
NET REGISTER TONNAGE:	1450
DEAD WEIGHT:	4500TE
MAX. SPEED APPROX:	15.5 KNOTS
FUEL TYPE:	MGO
BALLAST WATER:	404,183 FT
DRILL WATER:	346,065 FT
FRESH WATER:	264,172 FT
FUEL OIL:	303,797 FT

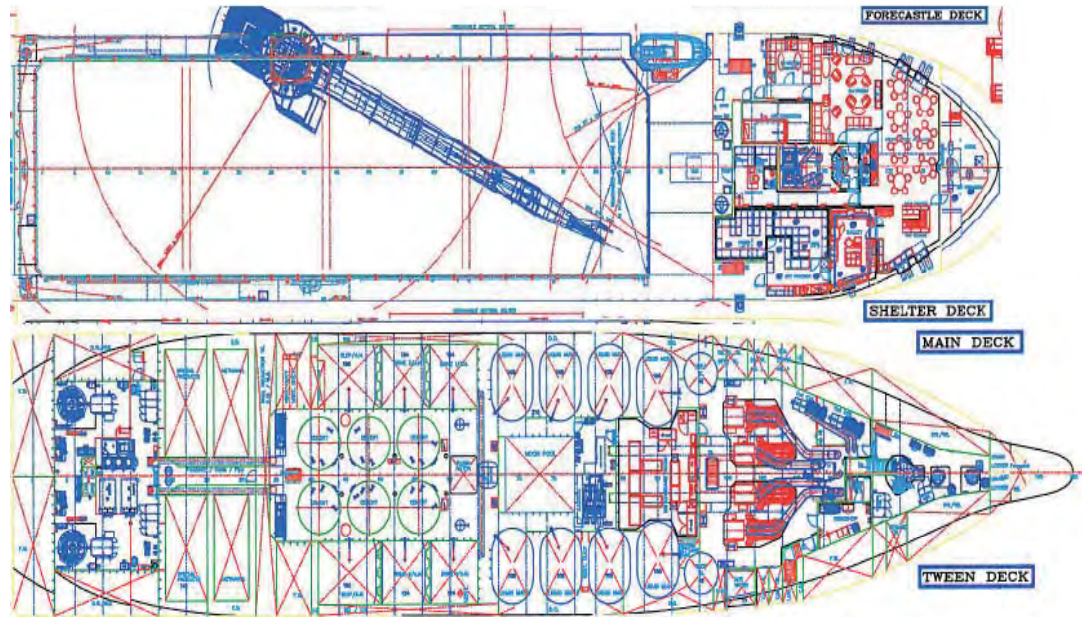


NOTICE: The data contained herein is provided for convenience of reference to allow users to determine the suitability of the Company's equipment. The data may vary from the current condition of equipment which can only be determined by physical inspection. Company has exercised due diligence to insure that the data contained herein is reasonably accurate. However, Company does not warrant the accuracy or completeness of the data. In no event shall Company be liable for any damages whatsoever arising out of the use or inability to use the data contained herein.



DPSV – ADAMS VISION

GA DRAWINGS



CRANE CURVE

